

How and where to look

Check your skin once a month for any changes or for suspicious-looking spots.

Your check should cover your whole body, front and back, with particular emphasis on areas exposed to the sun. Stand in front of a full-length mirror with a hand mirror for those hard-to-reach places.

1	Look at your face, including your nose, lips, mouth and on and behind your ears.	
2	Check your scalp, using a comb to part your hair in layers. If you do not have much hair, be sure to check your entire scalp very thoroughly.	
3	Check the front and back of your hands and in between your fingers.	
4	Then focus on your neck, chest and upper body. Women, be sure to check between and underneath your breasts.	
5	Bend your elbow to check your upper arm and armpits.	
6	Use your hand mirror to check the back of your neck and your back, top and bottom.	
7	Check your buttocks and the back of your legs. Finish by checking the soles of your feet and in between your toes.	

Who is at risk of skin cancer?

Skin cancer can affect anybody at any age. It is most common in people over 50, or people who have had prolonged exposure to the sun.

You are at higher risk if you:

- Have fair skin or are prone to sunburn
- Were sunburnt during childhood
- Have spent a lot of time in the sun (for work or leisure)
- Have periodical exposure periods (e.g. on holidays)
- Use sunbeds
- Have more than 50 moles
- Have a family history of skin cancer
- Are over the age of 50
- Have undergone an organ transplant

Whether you're in a high-risk group or not, there are simple things you can do now to protect you and your family from skin cancer.

By knowing the signs, and checking yourself regularly, you can stop any suspicious skin lesions before they become something more serious.

What to do next

Skin cancer can be treated, and early diagnosis makes the chances of a full recovery very high.

If you spot a suspicious lesion, it is vital that you have it checked by a doctor or preferably a dermatologist as soon as possible. Where treatment is delayed, the condition worsens, and in some instances, can lead to disfigurement, complications and even death. Don't let delay reduce your chances of a positive outcome.

The golden rules are:

- Don't ignore it, hoping it will go away
- Don't wait to see how it develops, or manage it yourself
- Don't assume it's nothing serious
- Don't think it isn't a priority to get it sorted
- And above all, don't be afraid to see your doctor or dermatologist

Skin cancer is treatable if it's caught early. If you have a spot that looks suspicious, go and see your doctor.

For more information about skin cancer, and how to prevent and detect it, visit www.euromelanoma.org.

Local Sponsors



YOU ONLY GET ONE SKIN



PROTECT IT FROM SUN DAMAGE

Skin cancer is the most common form of cancer. Learn how to prevent and detect it at www.euromelanoma.org

© Copyright 2017 Euromelanoma. All rights reserved.

With support from



Preventing harmful UV exposure is the key to reducing the chances of skin cancer

You only get one skin. It is your most precious garment, so look after it. Remember that the sun shines everywhere and that harmful UV rays can still damage your skin, even when it doesn't feel hot outside.

Always be sunsafe

Avoid unnecessary exposure

Seek shade where possible, and avoid the summer sun during the middle of the day.



Wear protective clothing

Include dark colours, long sleeves, a wide-brimmed hat and UV-rated sunglasses. For children, look for clothing with inbuilt sun protection.



Apply sunscreen

Check that yours has a high protection factor against both UVA and UVB rays. Remember that sunscreen takes effect around half an hour after its application and only lasts for two to three hours.



Children are at the greatest risk of long-term health issues related to unsafe sun exposure. Outside play is important, but you should never let a child get sunburnt.

What to look for

Check your skin for spots that:

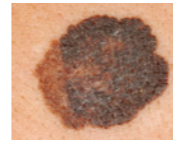
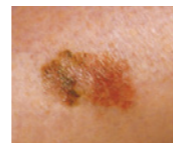
- Change size, colour and/or shape
- Appear different to the rest (the 'Ugly Duckling' sign)
- Are asymmetric or have uneven borders
- Feel rough or scaly (sometimes you can feel lesions before you can see them)
- Are multi-coloured
- Are itchy
- Are bleeding or oozing
- Look pearly
- Look like a wound but do not heal

If you see two or more of these warning signs, don't delay. Visit your doctor immediately.

4 main types of suspicious skin lesion

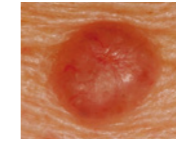
Melanoma

This is the least common form of skin cancer, but also the most dangerous. It can affect people of any age, unlike other types that are more common among older people. It presents as a spot that becomes darkly pigmented or develops irregular edges or different colours over time, or as a rapidly-growing pink or red lump. It can spread internally, so immediate treatment is required.



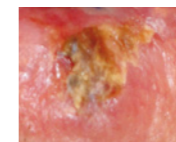
Basal cell carcinoma

This is the most common form of skin cancer, but also the least dangerous. It typically presents as an elevated skin-coloured lump with a shiny, pearl-like edge, a wound that does not heal, or a slightly crusty lump that grows slowly over time. If left untreated, it may ulcerate and invade deeper tissues.



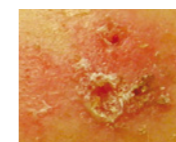
Squamous cell carcinoma

This is the second most common form of skin cancer, occurring in areas of the skin that have had a lot of sun exposure, such as the face and scalp. It presents as a crusty lump which may grow quickly and become ulcerated and weepy. It can spread rapidly, especially if on the lips, ears, fingers and toes, or in immunosuppressed patients. Surgical treatment to remove the lesions is essential.



Actinic keratosis

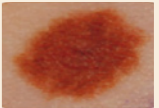

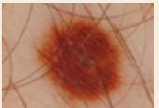

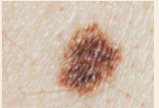




This occurs most commonly in middle-aged and elderly people, on areas most exposed to the sun such as the face, neck, ears, back of the hands and scalp. It presents as red-brown scaly and rough patches of skin. The lesions are pre-cancerous; in 10 – 15% of cases they may develop into squamous cell carcinomas, so they should be treated to prevent progression.



Signs of Melanoma

Because melanoma is particularly serious, you should be familiar with the signs to look for.

The ABCDE of melanoma can help you to detect it early:

A	Is the spot asymmetric?	Benign 	Malignant 
B	Does it have uneven borders?	Benign 	Malignant 
C	Does it contain different colours?	Benign 	Malignant 
D	Is it larger than 6mm in diameter?	Benign 	Malignant 
E	Is there an evolution in growth?	Before 	After 